

SUNSHINE COAST QUILTERS GUILD



Next MEETING Jan 31st, 2015: Holy Parish Hall, 5700 Nickerson Drive, West Sechelt

Jan 31, 2015

Special Points of Interest

Next meeting: January 31, 2015

Doors open: 8:45 am

**Mini workshops
commence: 9:30am**

Fees are waived as these mini workshops are 'Quilt Show' related

Sandwiching Quilts the easy way—Joan Harvey

Squaring quilts and adding Borders—Rojean Trent

Business Meeting: 11:00 am

Show & Tell
Coffee/Snack Break,
Program:

"Not Your Grandmother's Quilt" - Valerie Wilson

Executive meeting follows 15 minutes after the program ends and all members are welcome to attend.

Inside this issue:

Board & Group contact	2
Meeting minutes	3
Executive Minutes	4
Program	5
Comfort Society	6
Calendar of Events	8
Quilt Show & Challenges	10
CQA 2015 Project	13

PRESIDENT'S REPORT

Happy New Year everyone. Now that the festive season is over, it's time to get back to the business of quilting. I've finally started the quilt I've been planning to enter in the quilt show - have you? It seems like there's lots of time but it's now less than four months and don't forget the more quilts you enter the better chance you have to win that sewing machine.

At the executive meeting in November the decision was made not to have a retreat in 2015. We were not able to find anyone to

organize it and with declining attendance it was felt this might be a good time to take a breather and then approach the retreat with fresh eyes at a later date.

Another motion was passed at this meeting prohibiting planning of Guild events that conflict with the regular monthly meeting dates. Having said this, the February resource day will be held a week earlier on February 21st so mark your calendar

accordingly. This change is necessary as the church hall will not be available to us on the 28th.

Looking forward to seeing everyone at Resource Day

Lee Ewing
President



Next NEWSLETTER Deadline:

Feb 2, 2015

Things to Remember for meeting:

Coffee/tea cup -

*** Name Tag

Donation to hostess group for snack

Fat Quarter Draw: White
(Think Snow)

This Month's Hostess Group: Off the Wall

Hostess Schedule

January 31st, 2015: Off The Wall
February 21st, 2015: Gone to Pieces
March 28th, 2015: Pender Harbor Piecemakers
April 25th, 2015: ½ Moon Crazyies
May 30th, 2015: Fat Quarters
September 26th, 2015: Gone to Pieces
October 31st, 2015: 1/2 Moon Crazyies
November 28th, 2015: Cotton Club
January 30th, 2016: Fat Quarters

Sunshine Coast Quilters' Guild 2014-2015 Board Membership

<i>Position</i>	<i>Name</i>	<i>Position</i>	<i>Name</i>
President	Lee Ewing	Merchandise	Gail Reichert
Vice President	Judi Wilson	Bus Trip Chairman	Gail Reichert
Past President - Sunshine	Jeannette Lucas	Block of the Month	Debbie Scott
Secretary	Sheila MacDonald		
Treasurer	Priscilla Hendriks	Comfort Quilts	Sue Lowell, Marian Williamson, Jean Bowering, Liz Lacey, Carla Wilkinson
Membership	Sandra Leheup, Dale Spence Kathleen Bezaire	Publicity	To Be Filled
Program Committee / Mini Workshops	Ada Yeo Anne Selder Carol Dunsford	Library	Maria Lodzinski Liz Lacey & Christine Richardson
Website Administrator	Sheila MacDonald	Retreat Committee 2014	Helen Bailey - Chair Sue Lowell, Carol Bowie, Sandra Le- Heup
Newsletter Editor Assistant	Karen Biddlecombe Val Marus	Facebook Moderator	Shelly Cowan

Satellite Group Rep contact information:

Pender Harbour Piecemakers:

Lee Ewing 604-883-2620

lewing@dccnet.com

½ Moon Crazy's: Carol Bowie

604 885-4127

quiltscrapqueen@dccnet.com

Fat Quarters:

Nancy Climie

604 885-6745 nclimie@telus.net

Loose Threads:

Sonja Randall 604 885-7722

sonja_r@eastlink.ca

Gone To Pieces:

Beverly Butchart 604-886-8449

abutchart@telus.net

Off the Wall: TBD

Cotton Club: Beverly Butchart

604-886-8449

babutchart@telus.net

Advertising Rates (per issue* (PI) for period Sept - May, excluding Dec):

Classified.....	\$10.00 *PI
Bus card size.....	\$10.00 *PI
¼ Page for	\$14.00 *PI
8 issues.....	\$90.00
½ Page	\$21.00 *PI
8 issues.....	\$125.00
Full Page	\$42.00 *PI
8 issues.....	\$200.00
One time email to all members,	\$35.00

Please contact :
Val Marus:
valmarus1@gmail.com

Next Newsletter Deadline

Feb 2, 2015

for Meeting:
February 21st, 2015



EuroTech
Sewing Machine Repair

ALL DOMESTIC SEWING MACHINES & SERGERS
FORMER ALBEE'S SEWING CENTRE TECHNICIAN

Factory trained by
**PFAFF BERNINA ELNA
HUSQVARNA JANOME**

Wei Hin Ng
Service Technician
t: 604.568.1238
w: www.eurotechsewrepair.ca

Serving the Vancouver area since 1989

S.C.Q.G. RESOURCE DAY MINUTES: NOVEMBER 29, 2014

Call to Order

President Lee Ewing called the meeting to order at 10:58 am.

It was MOVED and SECONDED that the minutes of the meeting held November 1, 2014 be approved as circulated in the Newsletter.

CARRIED

No Correspondence:

Treasurer's Report: The available balance was reported to membership.

Old Business: The survey of Members regarding continuation of the program to make Baby quilts for the hospital was in progress.

No New Business:

Committee Reports:

Comfort Society: Marian Williamson introduced the Comfort Society Members – Sue Lowell, Jean Bowering, Liz Lacey, Carla Wilkinson.

Marian Williamson reported that there is 54 votes in favour of continuing the Baby Quilt program and 18 No votes. She reported that the members had committed to making 155 quilts. Marian reported that there were 45 quilts on hand and 12 more had been turned in at the meeting. She stated that there were 11 larger quilts on hand and 2 Christmas pillows.

The spool quilts made from blocks turned in a Hands Across the Water were ready to be sandwiched and quilted. Raffle Tickets will be ready for distribution in January.

Block of the Month

Debbie Scott announced the winner of the Block of the Month which was Judith Haugen. Debbie requested volunteer help for the time period from January to May.

Membership:

Kathleen Bezaire announced that there was 68 in attendance with 1 guest who signed up as a member. The Door Prize winners were: Eryl Shindel, Marg Kurys, Anne Willis, Louise Keats and Shelly Cowan.

Program: Anne Selder won the Fat Quarter draw.

Anne Selder reported that the January presenter is Valerie Wilson from Winnipeg. She will be giving a 1 day workshop on Stamping January 30, and a 2 day workshop "People Pets and Nature on February 1st and 2nd, this 2 day workshop is a class on perspective.

Anne reported that membership support is required to run the classes, stating that the classes will be opened to other Guilds if the classes were not filled.

Mini Workshops for the duration of the year are as follows:

January: Sandwiching your Quilt the easy way. – Joan Harvey and Borders and Squaring up your Quilt – Rojean Trent

February: Sleeves (The proper way for shows) - Carol Bowie Bindings – Lee Ewing

March: Labeling – Elizabeth Nordland and

Forms and reasons for information requested – Anne Selder

January Fat Quarter Draw – Black and White.

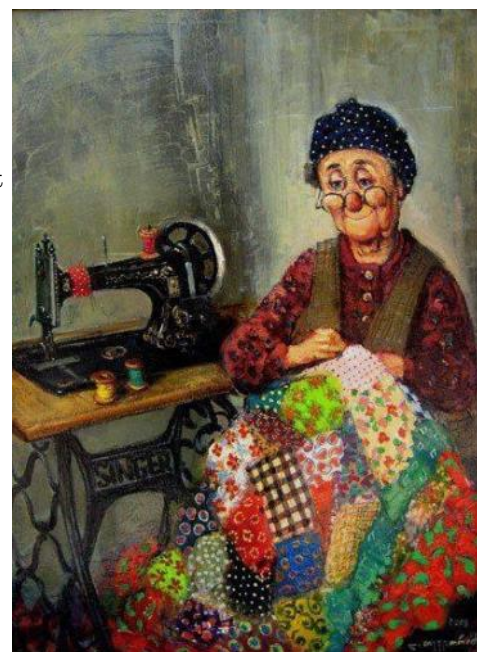
Newsletter: Karen Biddlecombe announced the deadline for the next Newsletter is January 6, 2015.

Publicity: A committee chair is still required for Publicity.

Quilt Show: Lois Anderson gave a Quilt Show report and announced that \$2,000 was made at the Auction. She reported that there were sponsors for the Challenges. The winners of the Brown Bag Draw were Fran Neville, Gail Junilla Martha Tatman, and Val Marus.

Show and Tell: Quilts are posted on the Website.

The meeting adjourned at 12:45 pm.



S.C.Q.G. RESOURCE DAY EXECUTIVE MINUTES: NOVEMBER 29, 2014

Call to Order

President Lee Ewing called the meeting to order at 1:00 pm.

It was **MOVED** and **SECONDED** that the minutes of the Executive meeting held November 1, 2014 be approved as circulated in the newsletter.

CARRIED

Retreat Financing

Carol Bowie brought up the issue of subsidizing the Teachers for Retreat and reported that our policies state that the Retreat and Bus Trips were supposed to be self-sufficient. There was discussion and it was decided that the issue should be tabled until the next year budget discussions when the Executive could consider subsidizing all activities of the guild.

It was **MOVED** and **SECONDED** that as there is no Volunteer to

head the Retreat Committee that the Retreat for 2015 would be cancelled.

CARRIED

CQA

There was discussion regarding a survey from CQA regarding insurance on property. The survey will be completed online.

Banking

Priscilla reported that she and Sheila had met with the Royal Bank regarding changing our account to a Commercial Account. She reported that this was going to increase our costs tremendously. Following discussion it was **MOVED** and **SECONDED** that changing our banking to Sunshine Coast Credit Union be investigated.

CARRIED

Door Prizes

Judi Wilson reported that it was becoming more difficult to obtain door prizes for the limit that is set. Following discussion it was **MOVED** and **SECONDED** that the Door Prizes

be kept to 5 and increase the amount spent to a limit of \$15.00 each.

CARRIED

Resource Days

There was discussion regarding the feeling that the Guild had gotten off to a slow start this year with the 1st Resource Day taken over by Hands Across the Water and then the Retreat at the end of October. It was **MOVED** and **SECONDED** that there can be no function or activity booked on the last Saturday of any month that would interfere with a Resource Day.

CARRIED

The meeting adjourned at 2:15 pm.



Are you a January baby?
What a great way to greet
the year with a birthday—
have a great day!

TIP: ORGANIZING FABRIC STORAGE: From not being able to find anything unless pulling out all the fabric and tossing aside, then having to put back again not in any type of order **TO** being able to see at a glance all fabric nicely folded and available for usage. Either purchase Comic Book Backers—available at comic book stores or online purchases (prices range from \$40 to \$60 depending on quantity ordered +shipping if online) **OR** purchase poster boards at the \$ store and cut into 8 1/2 x 11 sizes (6 per page = \$0.62/board). Fold fabric over top of board, then fold sides of fabric over sides of board and flip fabric end to end until all folded. Certainly allows the Quilter to pull fabric out and audition pieces and return to storage without a great deal of fuss. Larger sized fabrics could be folded onto the bolt boards that the LQS (local quilt shop) has kicking around—saving him/her from recycling them.



Program Events—January 31, 2015

Program:

Valerie Wilson will be here from Winnipeg doing a presentation entitled "Not Your Grandmother's Quilts".

Workshop:

On Sunday, February 1st, Valerie is teaching a class at Fibre Expressions on "Stamping/Printing on Fabric". This course is designed with a focus of stamping on fabric. The class will touch on stamping with commercial stamps, but the majority of the time will be spent on the students creating their own stamp designs using various materials, and then using these stamps to make designs on fabric. Valerie will provide cutting tools for creating the stamps. There will be an opportunity for students to purchase a set of cutting tools/ additional stamp supplies, after the class, if they should wish to do so.

There are still spaces available in this workshop. Please contact Ada Yeo or Anne Selder to sign up. We would like to fill the class.

Fat Quarter Draw:

The January 31st Fat Quarter draw will be for **White** fabric. Think snow. There are lots of great white tone on tone fabrics available.

Mini Workshops:

Mini workshops from now through April will all be quilt show related. There is no charge for any of these workshops.

January: Joan Harvey will do a demo on sandwiching quilts the easy way.

Rojean Trent will do a demo on squaring a quilt and adding borders to the quilt.

REMINDER: We need a volunteer to organize these fun and informative mini-workshops. The volunteer would be in charge of the

mini-workshops but would always have the help of the other committee members. Mini workshops are in place through April. Regular mini workshops will start up again in May 2015.

The following renowned quilters have agreed to come and give a presentation on future Resource Days as well as teach several classes. For each teacher, we will have class choices available at the Program Committee table. Please stop by our table and let us know what classes you would be interested in. Your input is needed to help us bring you the classes you want to take. Also, please visit each quilter's website to view examples of their work as well as more details on the various classes offered.

February, 2015:
Susan Purney Mark, Victoria, B.C.
www.susanpm.com

March, 2015:
Hilary Rice, Stirling, Ontario
www.mestudios.ca

May, 2015
Helen Fujiki, Toronto, Ontario
www.fujiwaquilting.com

September, 2015
Coreen Zerr, Nanaimo, B.C.
www.coreenzerr.com

October, 2015
To be announced

November, 2015:
Carol Seeley, Campbell River, B.C.
www.fibreartnetwork.com

September 2016:
We have Gloria Loughman coming from Australia! Go to her website to see her amazing work and let us know what classes you would be interested in. Do you prefer 1 or 2 day classes or a 5 day class? Or a mix of both? We need your input.

Thank you, Your Program

Committee:
Anne Selder,

graniteridge@dccnet

Ada Yeo
mjyeo@aol.com

Carol Dunsford
cdunsford@hotmail.com

The perils of giving a quilt as a gift.

Here are some tips to make sure your next quilt gift is appreciated!

- Ask first. Don't go to all the trouble if they really don't want it.
- If you can't ask directly, ask their friend. Someone who knows them well will know if they really would like a quilt or quilted gift.
- If you can't ask (or don't want to ask), make something simple and don't put a lot of effort into it. That way if they put the quilt away and never use it, you won't feel frustrated because you've spent a week's salary and all your spare time working on the gift.
- Make the gift so that it will fit with the recipient's decor. If you like to make traditional pinwheel quilts in blue and yellow, but their decor is woodsy natural with brown and green flannel, it's likely your quilt won't get much use at their house!
- Same goes for baby quilts - many young mothers today like the modern quilting look. It may mean you have to step out of your comfort zone, but good on you for doing it!
- Make a small item that isn't going to be the big pink elephant of the room. It's easier to display a small table runner than a bed quilt.
- Make a seasonal or themed quilt project - if it's holiday themed, they'll be more inclined to use the gift by displaying it for a few weeks instead of all year round. Lastly, gift the gift with no expectations in return. That way you will be pleasantly surprised when you get a big hug and a 'THANK YOU'!

SUNSHINE COAST COMFORT SOCIETY

2014-2015 – Comfort Society

Committee: Jean Bowering, Liz Lacey, Sue Lowell, Carla Wilkinson, and Marian Williamson

HAPPY NEW YEAR!

Thanks to all who delivered **baby quilts** to the two resource days in November..... since the end of November, we have delivered 16 to St. Mary's Hospital, including one special Christmas quilt. The staff were excited about having a Christmas quilt on hand as there were two babies due on Christmas Day. December was a "light" month for babies with only 7 expected. In November there were 16 babies born.

Additional thanks to all who registered their votes either yay or nay regarding **continuation of baby quilts** into 2015. Final results were 72 votes – 54 YES and 18 NO. The positive 54 votes = 155 quilts

thus the project continues for 2015! Thanks for giving this very worthwhile project the thumbs up for another year.



Here are some baby quilts all ready for St. Mary's Hospital babies = 1374 inches

Another very worthwhile collaboration in 2014 was the **quilt bee** which produced quilts for Sumac Place. **Sumac Place** is a Vancouver Coastal Health 28 bed residential treatments and rehabilitation facility in Gibsons for clients with persistent or complex mental health needs.

In December, we delivered two Christmas pillows and 4 more

quilts for new residents at Sumac Place. President Lee Ewing and Marian Williamson attended a Christmas luncheon where we had the opportunity to interact with residents. They are very fond of their quilts! Some very positive observations were made! We wish to continue to provide each new resident at Sumac with their own personal quilt to take along with them on their personal journey to optimum recovery.

January is time to focus on the upcoming **Quilt Raffle**. Watch for details at the Resource Day on January 31, 2015.

Please let us know if you hear of any other need in the community. Looking forward to another successful year!

“JOY THROUGH GIVING = CREATING MEMORIES FOR OTHERS TO ENJOY”



Andrea Sierralta and Robyn Walker, staff at Sumac Place, enjoyed celebrating Sumac Days. - Photo Submitted

Clients, volunteers and community members came together earlier this month to help celebrate a two-year anniversary for Sumac Place.

The program at Sumac Place was developed to support clients with chronic and persistent mental illness in their journey to overcome challenges related to their mental health. The recovery model allows clients to build on their strengths and work towards their individual goals. Its focus is to re-establish the belief that recovery is possible and obtainable with the right approach.

Sumac Days was created not only as a fun event for clients and families to come together, but also an opportunity for Sumac Place to thank and acknowledge all the wonderful community businesses and volunteer groups who contribute to its program.

This year the Sunshine Coast Quilters' Guild donated 28 hand-made quilts so that each client would have a welcoming, warm blanket for their bed.

Every Friday morning an instructor from Taoist Tai Chi volunteers her time to teach tai chi to clients and staff. Many businesses and non-profit organizations have created opportunities for clients to be employed and learn skills that will lead to greater independence.



Granville Island ~ a perfect
place to visit and be inspired

THE CLOTH SHOP

104~1551 Johnston Street Vancouver
604.224.1325 1.877.224.1325



Sew Easy

Alton Toth
Jenny Margueratt

604-885-2725

Located in Trail Bay Mall
5755 Cowrie St
Sechelt BC

e: seweasy@dccnet.com

www.seweasy.ca



Hamels FABRICS & QUILTING

Canada's Largest Online Quilt Shop

www.hamelsfabrics.com

- Fabrics
- Books
- Patterns
- Notions
- Quilting Kits
- Quilting Clubs
- Block of the Months

**FREE
SHIPPING!**

Canadian orders
of \$200!



Toll Free Order Line : 1-877-774-2635

Email: hamelsfabrics@shawcable.com

5843 Lickman Rd., Chilliwack, BC V2R 4B5

Fibre Expressions
Quilt Shop

**START THE NEW YEAR BY LEARNING
SOMETHING NEW!**

NEW CLASSES are on the website!

Come by the store to see the samples & sign up!

Did You Know???

JANUARY 24th is

LOCAL QUILT SHOP DAY!

Watch your email for more info.

**Spend \$20.00 or more in January & receive a
discount coupon for the month of February.**

January Clearance sale!

All Books & select fabrics up to 50% off!

www.fibreexpressions.com

604-885-6677

CALENDER OF EVENTS:

Jan 15—Mar 9, 2015 Cabins to Quilts

Memorial Library, 1950 Marine Drive, West Van
Created by members of the Lions Gate Quilters Guild,
Contact: jjardine@westvanlibrary.ca or 604-925-7446

Mar 14—15, 2015 Celebration of Quilts

Powell River, B.C.

Email: info@timberlanequiltersguild.ca

Website: www.timberlanequiltersguild.ca

April 17—18, 2015 Timeless Treasures—A decade of quilting—Westshore Quilters Guild

The Eagle Ridge Community Centre 1089 Langford Pkwy
Victoria, BC Hours: 10-6 details:
www.westshorequiltersguild.com

May 8—9, 2015 Quilted Creations X

Penticton Trace & Convention Center, Penticton BC
Admin: \$7.00 contact: 250-490-4096 Marilyn Govier

Email: quiltsbymarilyn@shaw.ca

Website: pentictonquiltersguild.com

June 1-6, 2015 CQA, - see website for full details

Lethbridge, Alberta

website: cqacanadianquilting.blogspot.ca/

Sept 26, 2015 Hands Across the Water (HAW) -
Quadra Quilters on Quadra Island will be hosting.
Sept 25/15 workshops.

Heather van der Est 6250-285-3509

Email: eather@gicable.com

NEW INFO: SCQG is now registered on these websites.

Check them out!

Quilt Guilds and Quilt Shows worldwide website:
<http://www.quiltguilds.com/>

<http://quiltinggallery.com/>

THE BRAIN

Before QUILTING



Snip & Stitch
SEWING CENTRE
NANAÏMO

#1-4047 Norwell Drive
Nanaimo, B.C. V9T 1Y6

"Like" us on facebook
Snip & Stitch Sewing Centre

Follow us on twitter
@snipandstitch

Join the conversation on our blog
www.snipandstitchblog.wordpress.com

Discover the world of sewing!
"Travel through our store for a refreshing experience"

Follow us for the latest from Snip & Stitch. We've got it all for you!

Unwind
knit & fibre lounge

www.unwindknitandfibre.ca

210-1100 Sunshine Coast Hwy
Gibsons, BC

AURELIA
WOOL

www.aureliawool.com

your local yarn specialists

Come see us for pattern enlargements & reductions

OPEN Mon-Fri 9:00 - 5:30

Enjoy our same day service for printing/copying, fax/scanning, laminating, photo enlargements, art canvas & so much more!

Visit us at:
#2 - 5647 Cowrie Street in Sechelt
www.coastcopy.ca
info@coastcopy.ca

COAST COPY CENTRE

Hello Quilters—Please find attached the info. and order forms for the Canadian North patterns. A few people were asking me about them after my talk on Friday evening (editor note: 2014 Quilt Retreat).

Also the patterns for the iron caddies/ironing pads I had mentioned to the class are made by Sisters Common Thread and called "Caddy Pad". There are three sizes, regular iron, travel iron & mini iron. Each pattern comes with the silver heat proof fabric to make the inside. I use mine all the time as you can put your iron away without waiting for it to cool off completely as the pad folds around it to make a bag totally enclosing the iron.

The patterns are available from Connecting Threads in the USA online but I expect your quilt store could bring them in also.

Keep on quilting, Hazel Wainwright (hazel@theatrekyk.ca)

Seriously northern quilting fun!

To celebrate Canadian North's 10th Anniversary these fun slices of northern life quilting patterns were developed from a series of colouring pages produced in April 2008. The illustrations are by Yellowknife artist and quilt pattern maker Janet Pacey.

Proceeds from the sales of these patterns will go to Quilters Around the North - a Yellowknife based quilting group that travel around the north helping people communicate through crafts.



Muskox	Blanket Toss	Dog Sled	Igloo	Kite	Fishing	Hockey	Canoe	Campfire
--------	--------------	----------	-------	------	---------	--------	-------	----------

Collect all nine wall hanging designs then put them all together to make a quilt!

They're simple enough for beginners and fun enough for more experienced quilters.

A fun way to spend the day!

Includes full size reversed tracing pattern, 11" x 11".

order yours...
Just email us at hwainwright@canadiannorth.com or fax 1-867-866-8880 873-6115

CANADIAN NORTH
seriously northern

canadiannorth.com • reservations 1.800.661.1505 • cargo 1.866.663.2223

CANADIAN NORTH
seriously northern

Quilt Pattern order form

Shop to	Name	Street Address	Community, Territory, Postal Code	Phone	Email
Mastercard	VISA	American Express			
Account:					
Expiry Date:					
Name on Card:					

Item	Description	Price	Quantity	Total
Muskox		\$10		
Blanket Toss		\$10		
Dog Sled		\$10		
Igloo		\$10		
Kite		\$10		
Fishing		\$10		
Hockey		\$10		
Canoe		\$10		
Campfire		\$10		
Total				

Please fax form to Hazel Wainwright at 867-866-8880 873-6115 or email to hwainwright@canadiannorth.com

Coastal Smiles

Dental Hygiene Services

Monica Maletz, BSc.
Registered Dental Hygienist

35 years Experience

No referral necessary.
Dental plans accepted.

604-885-7565

#102 - 5682 Wharf Road, Sechart

Appointments available at McEwen Denture Clinic

Editor note: full sized documents available to download on our website www.scquiltersguild.com or email Helen W.

Fibre Works STUDIO & GALLERY

fibeworksstudio12887@gmail.com

www.fibeworksgallery.com

604-883-2380 12887 Sunshine Coast Hwy (the yurts)

FibreWorks Gallery will be closed

January 05, 2015 thru to

April 03, 2015.

FibreWorks Studio will be open by appointment
during that time.

Watch our website as we finalize arrangements
for 2015 workshops and exhibitions.

Best wishes for a colour-filled 2015!

Yvonne

12887 Sunshine Coast Highway

Box 311

Madeira Park, BC

VON 2H0

www.fibeworksgallery.com

604-883-2380

Quilt Show Update

As we are doing raffle baskets to help fund the Quilt show.....

(We did not get the Arts Council grant I applied for so this is even more important)

We need your help to fill them.

Basket 1 - Will be filled with **Batik Fat Quarters** - we need your donation
of a Batik Fat Quarter.

Basket 2 - Will be filled with **Kitchen** items. If you can make pot holders, an apron, table
runner, casserole carrier or placemats

Basket 3 - Will be filled with **Garden and Spa items**. Perhaps an apron, Snuggle bean bag
(for those aching back muscles) any other suggestions??

******If you can make any of the items I have mentioned please let me know at Resource Day***

Class Registrations - still room but Twisting Nature is filling up.

Dinner Tickets - about one third sold. Buy now to assure your spot!

Thanks - Lois Anderson 604-886-9127

Sunshine Coast Quilt Show
Celebrating 25 Years of Quilting Arts
May 1st. - 3rd. 2015



Satellite Groups of the SCQG

Gone To Pieces
Cotton Club

$\frac{1}{2}$ Moon Crazies
Off The Wall
Loose Threads

Fat Quarters
Pender Harbour Piecemakers

As you know we are well under way with our plans for our next Quilt Show. Please share the enclosed information of the show with the members of your group.

A few items to high light that may be of special interest:

- Our **draw for a sewing machine** - only open to Guild members - read the rules!
- **2015 Quilt Show Challenge** - "Primary Colors and Beyond "
This will challenge your color knowledge - not a large project
- **2015 Banner Challenge** - "Coastal Impressions" width 25 inches but needs to be 6 to 8 feet long. These will be hung from the ceiling. Perhaps work in pairs?
- **10 categories** for the Judged show - 2 new - **Modern** and **Wearable Quilted Garment**
- **Two classes with Anna Hergert** - **Twisting Nature** and **Kantha** \$90 for Guild members and after January 25, 2015 open to the public at \$120 for non-members.
- **Anna's Lecture** - **Fanning the Fire of Creativity and Trunk Show** - This is preceded by a no- host dinner at the Sunshine Coast Golf Club. At present tickets are available only to Guild members but any unsold tickets will be available to the public after January 25, 2015.
- **We are bringing back** ribbons for the general show - public votes on small, medium and large categories.

We would like your help:

1. We are going to have **door prizes** for the public each day of the show. To help us do this we are asking each group for three (or more) prizes. These are to be suitable for anyone. Suggestions are: pot holders, pillow cases, table runners, aprons, small wall hangings, quilted bags.
2. Something new this quilt show will be our used books (Quilt related) and magazines that will be on sale at the boutique. So don't toss out those items. Save them for us - we will be accepting donations in January.
3. **Lastly** - Would your group consider sponsoring one of the Challenges or perhaps a judged category for \$25 or \$50? As of now I have no monies available for a \$\$ prize for the challenges (there will be ribbons) and would appreciate any help towards this and also our judges categories.

Complete information of the show is now up on the web site under upcoming events. www.scquiltersguild.com

Pre bookings are now being taken for the two classes and the dinner/lecture - call Lois.

Door Prize Co-ordinator: Marg Kury

604-885-5489

mail4margi@dccnet.com

Lois Anderson 604-886-9127

Quilt Show Chair

loisanderson@dccnet.com

Sunshine Quilt Show Celebrating 25 Years Of Quilting Arts— **1st: 2015 Quilt Show BANNER Challenge**

BANNER CHALLENGE

“Coastal Impressions”

In keeping with our quilt show theme – “Celebrating 25 years of Quilting Arts”, this challenge should be your personal reflection of coastal Impressions and how it inspires your quilting. This banner does not need to be abstract; anything goes just use your imagination.

Banner Challenge Rules

Top side Banner Width must be 25” (inches) in keeping with 25 years of quilting on the coast.

Length can be between 8-10’ (feet)

Banner must have one or more PRIMARY Colors incorporated.

50% or more must be three layers in keeping with the definition of a quilt. i.e. if you plan on using a sheer fabric then strips, appliqué or whatever other technique used needs to be three layers, three layers of anything used in the banner will be accepted. E.g. Three layers of sheer would be classified as quilted.

Banner must be Hangable from the 25” top.

Alternative to Banner:

We know that not everyone wants to create a banner, therefore, if you wish to create a table runner or bed protector or whatever. The choice is yours. The rules for the banner hold for these alternatives as well. Critical is that the width of 25” is mandatory and the lengths must still be between 8-10 feet.

You do not have to make the runner or protector double sided. However Backing used must be in keeping with the theme of your chosen work.

Get a partner or partners and create something wonderful to celebrate our 25th Anniversary, might be more fun that way.

2nd: 2015 Quilt Show Challenge: *“Primary Colours and Beyond”*

“Primary Colours and Beyond”

Keeping with our theme – “Celebrating 25 years of Quilting Arts”, this challenge should be your personal reflection of what your years of quilting means to you. We want you to think outside your box. Create something unique that reflects how special quilting is for you and what it means to you. Make something creative for our 25th anniversary of quilting on the Sunshine Coast.

Challenge RULES:

Measurement of **two sides has to equal 25 inches**. i.e. if length is 12” then width would have to be 13” or if length was 6” then the width would have to be 19”. Your piece does not have to be symmetrical,

square or rectangular. As long as half the measurement is 25”.

Must use **only one** of the primary colors. Primary colors are pure red, yellow and blue

Must use **two tertiary colors**. Check your color wheels or books on color to determine tertiary colors. A primary mixed with a secondary creates a tertiary colour. Example of tertiary colours: turquoise, blue-violet, red-violet, red-orange, yellow-orange and lime green. Please **do not use secondary colors** which are: Orange, Purple and Green.

You can use tints and shades of the tertiary colors you have chosen.

If using a background it must be neutral in colour such as: black, white, ecru, grey.

Quilts must have appropriate sleeves for hanging. If sleeves are not appropriate the quilt may not get hung.

That’s it for the rules; the rest is up to you. **Remember this is supposed to be a challenge but it should always be fun as well.** Let your creative juices flow and think outside your box. Nothing says that you have to do abstract, anything goes as long as you meet the rules. Make your challenge memorable for our 25th Anniversary.

The Challenge committee reserves the right to disqualify any quilts that do not meet all the rules.

2015 Quilt Show Challenge Committee:

Anne Selder

Rojean Trent

www.scquiltersguild.com

Canadian Quilting CQA—2015 PROJECT also posted on the

www.scquiltersguild.com AND <http://www.canadianquilter.com/events/quilt-canada-2015.php>

Tablet Bag for Banquet Guests at Quilt Canada 2015

This makes a lovely size shoulder bag and is the perfect project to perfect your machine quilting on !!! The bag fits a tablet (with case) and a few little bits. Please mail your bags to: Pjam Swen, #1507 22 Ave., Coaldale, AB T1M 1E4

Materials:

Main fabric (outside of bag): 20 x 13"

Contrast fabric (inside of bag and both sides of flap) : 30 x 15"

Batting (not too thick : 30 x 13"

Thread to match.

From contrast fabric cut: 1 pce. 2½ x 30"

1 pce. 20 x 13"

plus 2 template pieces (cut with
wrong sides together)

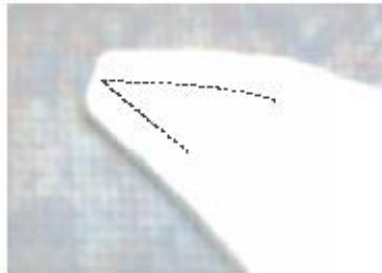
Template is at end of pattern.

Construction:

- Place template pieces one each to short end of main and contrast fabric right sides together. Sew with ¼" seam allowance. Press seams open. Don't worry if your "whoosh" goes the other way, it really doesn't matter.
- Layer batting with both pieces of fabric on top (fabrics right sides together), pin securely so it doesn't shift during sewing. Sew all the way around with ¼" seam, leaving an opening on a long seam (about 3" from a corner). Press seam allowance of opening over, so it'll be easy to sew. Trim batting along curved edge.



- Make little clips to the inside curve of the flap to close to the stitching. Trim seam allowance close to stitching at point of flap. Corner cut 90° angles.



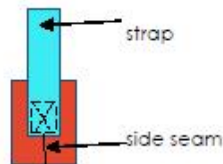
- Turn inside out, poke out corners and flap point, not too hard !
- Topstitch the opening you left for turning VERY close to the edge
- Press edges all the way around while "rolling out" the seam
- Topstitch the **curvy edge only** of the flap. About 1/4" from the edge.



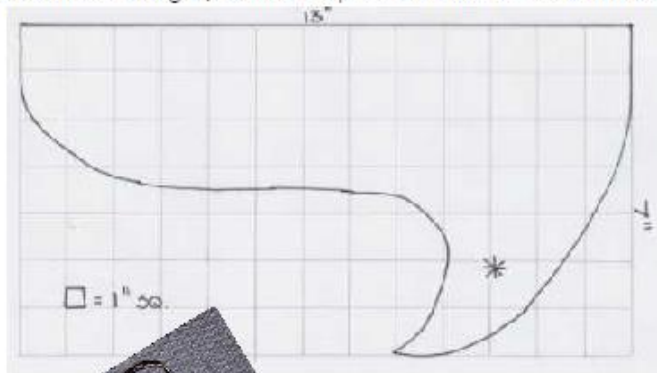
- Quilt the whole thing (including flap) fairly densely (to give extra body to the fabric)
- Fold together lengthwise, so that the short straight edge is 1/4" from the flap seam, main fabric sides together.
- Stitch the side seams with a 1/8 to 3/16" seam allowance, making sure to "back and forth" at the top and bottom of each side.
- Turn inside out, press seams, while pushing out the seams
- Fold flap over bag and press folded edge very thoroughly. **Optional:** if you wish to make a closure on your bag, sew button on bag and make button hole in flap (marked by *).

alternately you could sew a large snap to the inside of the flap and on bag, for invisible closure.

- Using the 2½ x 30" strip of contrast fabric, fold both long sides over, so that the strip is folded in thirds (the overlapping long side should not quite make it to the fold of the other side), press. Fold in half and press again. Top stitch twice close to edge or once with twin needles.
- Fold short end over ½" and topstitch very securely **on both side seams**, making sure not to twist.



I hope you enjoyed making this bag and that you will like it well enough to make it for yourself as well !!
Please note: the ratio length / width in the picture is a little off. It will turn out slightly wider looking.



Answers from
page9

- | | | |
|---------------|-------------------|--------------------|
| 1. log cabin | 4. storm at sea | 9. rail fence |
| 2. bear paw | 5. irish cream | 10. lasagna |
| 3. nine patch | 6. maple leaf | 11. turning twenty |
| | 7. attic window | 12. landscape |
| | 8. feathered star | |

SUNSHINE COAST QUILTERS' GUILD

P.O. Box 2083
Sechelt, B.C.
V0N 3A0



www.scquiltersguild.com

Guild memberships are renewed each year starting in September, and are valid until the end of May.

Memberships cost \$40 if you choose to access the newsletter on our web site.

Additional charges imposed if you prefer to have printed copies mailed to you. We welcome guests (there is a drop-in fee) and love to have new members join us.

HISTORY

In 1982 a group of women on the Sunshine Coast got together to share their love of quilting. Pat Crucil, an accomplished quilter and teacher, established this first quilt group on the Coast.

Today the Sunshine Coast Quilters' Guild is the "umbrella" organization for seven local community quilt groups from Pender Harbour to Gibsons, with a membership of 175. The guild promotes the joy of quilting on the Coast by providing enjoyment through quilt shows, classes, demonstrations and displays. We continue to meet eight days throughout our Guild year, from September to May at the Holy Family Parish Hall in West Sechelt (5700 Nickerson Road). Our meetings consist of Mini-Workshops, Business Meetings, Show and Tell, and a Program.

Do You know your Quilt Acronyms?

BOM
DSM
FART
FOB
FQ
HST
LA
LAQ
LQS
MAQ
OBW
PhD
PIGS
PP
QAYG
RR
SABLE

Quilt Acronyms continued:

SEX
SID
SnW
Squishy
STASH
TGIF
TOT
UFO
VIP
WHIMM
WIP
WISP
WWIT
WOF
WOMBAT
WOW

Note: We will go over the answers at the January meeting. If you are unable to attend just email:
Karen@klbhr.ca