

QUILT BLOCK CHALLENGE: (used with permission)

This diagram is for use with the
FALLING LEAVES QUILT
 project featured on our YouTube channel:

 [YouTube.com/ShabbyFabrics](https://www.youtube.com/ShabbyFabrics)

FOR EACH BLOCK

From **leaf fabric**, cut:

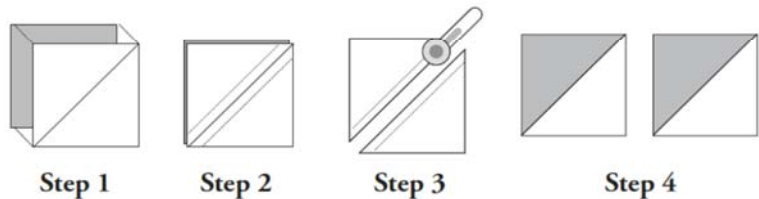
- (4) $2\frac{7}{8}$ " \times $2\frac{7}{8}$ " squares for **leaf point Half Square Triangles (HST)**
We used 1 of each of 4 fabrics in the chosen colorway.
- (8) $2\frac{1}{2}$ " \times $2\frac{1}{2}$ " squares for **inner leaf**
We used 2 of each of 4 fabrics in the chosen colorway.

From **black fabric**, cut:

- (1) $4\frac{1}{2}$ " \times $4\frac{1}{2}$ " square for **stem background**
- (4) $2\frac{7}{8}$ " \times $2\frac{7}{8}$ " squares for **leaf point HST**
- (2) $2\frac{1}{2}$ " \times $4\frac{1}{2}$ " rectangles for **two side rectangles**
- (1) $2\frac{1}{2}$ " \times $2\frac{1}{2}$ " square for **small corner**

HALF SQUARE TRIANGLES

Step 1: Place two $2\frac{7}{8}$ " \times $2\frac{7}{8}$ " squares RST with the lighter fabric on the top. Draw a line from one corner diagonally to the other corner. **Step 2:** Sew $\frac{1}{4}$ " on either side of the drawn line. **Step 3:** Cut on the drawn line. **Step 4:** Open and press seam toward the darker fabric. You will now have two pieces.



BLOCK ASSEMBLY

Referring to diagram below, arrange pieces in desired layout.

Piece the rows in Unit 1, pressing seams in alternating directions. Sew Rows 1, 2, and 3 together.

Join the two pieces in Unit 2. Sew Unit 1 and Unit 2 together, pressing seam open.

Piece the two rows in Unit 3. Sew Unit 3 to the Unit 4 square, pressing seam open.

Sew Unit 1/2 to Unit 3/4, pressing seam open.

Repeat for a total of 16 blocks.

